

Description

- Acc. to IEC standards;
- Three-phase transformers, for indoor or outdoor use;
- Step-down type (1);
- Rated frequency: 50 Hz (1);
- Max ambient Temp : 45°C (1);
- Mineral oil immersed (1);
- Conservator Type(3);
- Cooling: ONAN ;
- Final colour RAL 7038 or 7032 (1);
- Operation altitude up to 1000m above sea level;

Power (1)	Voltage (1)		Taps in HV side (1)	Vector group (1)	Rated Impeda- nce	Losses		Noise level	Efficiency at full load(min) P.F.=0.8	Total Weight (max)	Overall dimensions(max)			Wheels interval	Wheel diameter
	HV	LV				No-load	Load (2)				A	B	H		
[kVA]	[kV]	[kV]	[%]		[%]	[W]	[W]	[d B]		[kg]	[mm]	[mm]	[mm]	[mm]	[mm]
25	20	0.4	±1*4	Yzn5	4	110	700	48	95.72	375	857	708	1236	520	-
50	20	0.4	±1*4	Yzn5	4	145	1100	50	96.76	525	900	715	1307	520	-
75	20	0.4	±1*4	Yzn5	4	203	1425	52	97.02	575	1001	707	1456	520	-
100	20	0.4	±1*4	Yzn5	4	260	1750	54	97.30	655	1012	713	1440	520	-
125	20	0.4	±1*4	Yzn5	4	310	2000	55	97.55	810	1066	735	1479	520	-
160	20	0.4	±1*4	Yzn5	4	375	2350	56	97.73	905	1108	730	1492	520	-
200	20	0.4	±1*4	Yzn5	4	445	2760	58	97.87	985	1106	806	1543	520	-
250	20	0.4	±2*2.5	Dyn5	6	530	3250	60	97.95	1185	1368	845	1516	520	-
315	20	0.4	±2*2.5	Dyn5	6	625	3850	61.5	98.11	1355	1560	970	1599	670	-
400	20	0.4	±2*2.5	Dyn5	6	750	4600	63	98.18	1595	1643	920	1840	670	150
500	20	0.4	±2*2.5	Dyn5	6	875	5450	64	98.31	1870	1702	970	1900	670	150
630	20	0.4	±2*2.5	Dyn5	6	940	6750	65	98.37	2225	1785	1060	1958	670	150
800	20	0.4	±2*2.5	Dyn5	6	1150	8500	66.4	98.38	2705	1980	1125	2025	670	150
1000	20	0.4	±2*2.5	Dyn5	6	1400	10500	68	98.41	3255	1948	1182	2289	820	200
1250	20	0.4	±2*2.5	Dyn5	6	1730	13200	69.25	98.38	3905	2082	1300	2320	820	200
1600	20	0.4	±2*2.5	Dyn5	6	2200	17000	71	98.39	4725	2438	1558	2490	820	200
2000	20	0.4	±2*2.5	Dyn5	6	2645	21200	72.4	98.4	5685	2470	1480	2520	1070	200

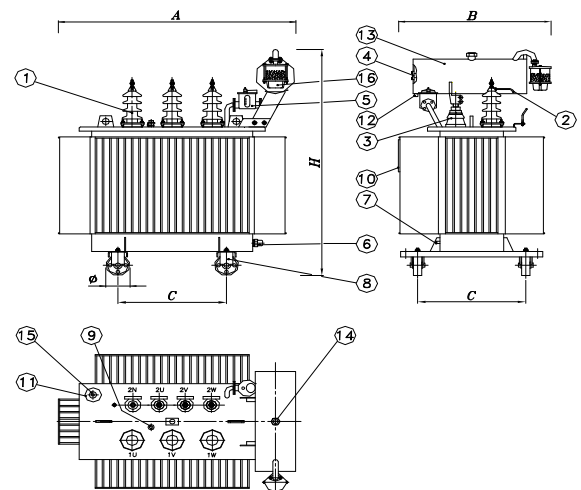
(1) Others upon request, contact us.

(2) Load loss at 75°C.

(3) Hermetically sealed type transformer upon request

Standard Accessories of Distribution Transformer						
No.	Accessory	Power(kVA)				
		25-160	200-315	400-500	630-800	1000-2000
1	HV bushing	●	●	●	●	●
2	Arcing horns	●	●	●	●	●
3	LV bushing	●	●	●	●	●
4	Oil level indicator	●	●	●	●	●
5	Buchholz relay	-	-	-	-	●
6	Oil drain & sampling valve	●	●	●	●	●
7	Earthing bolt	●	●	●	●	●
8	Wheel	-	-	●	●	●
9	Off circuit tap changer	●	●	●	●	●
10	Name plate	●	●	●	●	●
11	Oil temperature indicator	-	-	-	●	●
12	Conservator tank drain valve	●	●	●	●	●
13	Conservator	●	●	●	●	●
14	Conservator filling plug	●	●	●	●	●
15	Thermometer pocket	-	●	●	●	●
16	Dehydrating breather	●	●	●	●	●

● Applied accessory


Notes :

-For other electrical characteristics, dimensions and weights, please consult us.

-Ask for confirmation of the information given in this publication. Present document will bind us only after confirmation from Marketing & sales department.